



# 575 ROSEMARY

AN OFFICE DESIGNED  
FOR THE FUTURE OF WORK

 RELATED

# OFFICE OFFERING

- 35,900 RSF
- Opening April 2024
- Designed by celebrated architect, Elkus Manfredi
- Private office lobby and elevators with branding opportunity
- Exclusive exterior signage opportunity
- Collaborative layout
- Floor to ceiling wrap-around windows offering natural light and views of the city
- Private outdoor terrace
- Access to state-of-the-art amenities in the heart of The Square neighborhood
- Steps from retail and dining





Ground floor lobby with branding opportunity



Walkable to a wide array of restaurant offerings

# SECOND FLOOR

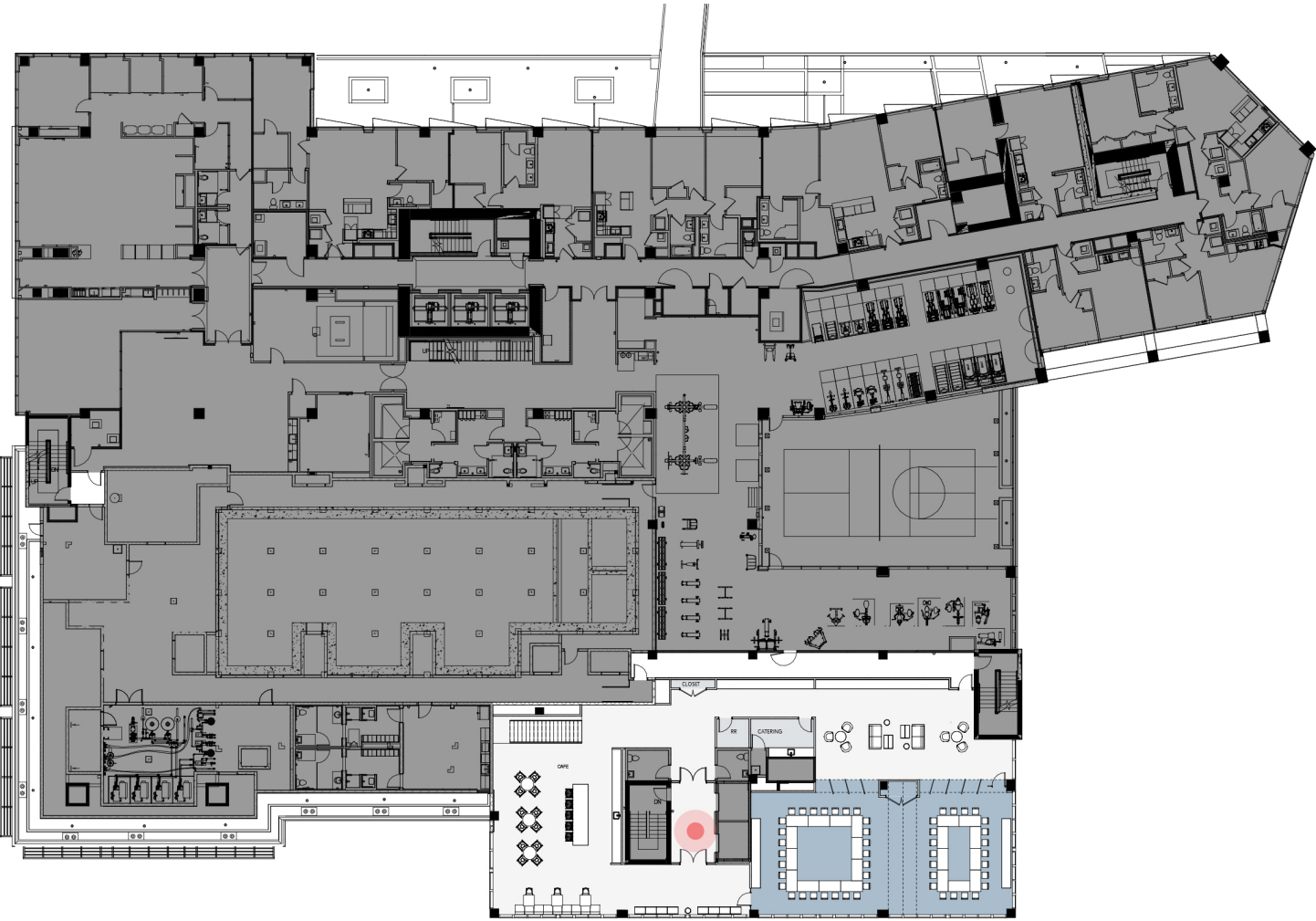
Test Fit – Tech Firm  
30,000 RSF



# THIRD FLOOR

Test Fit - Tech Firm

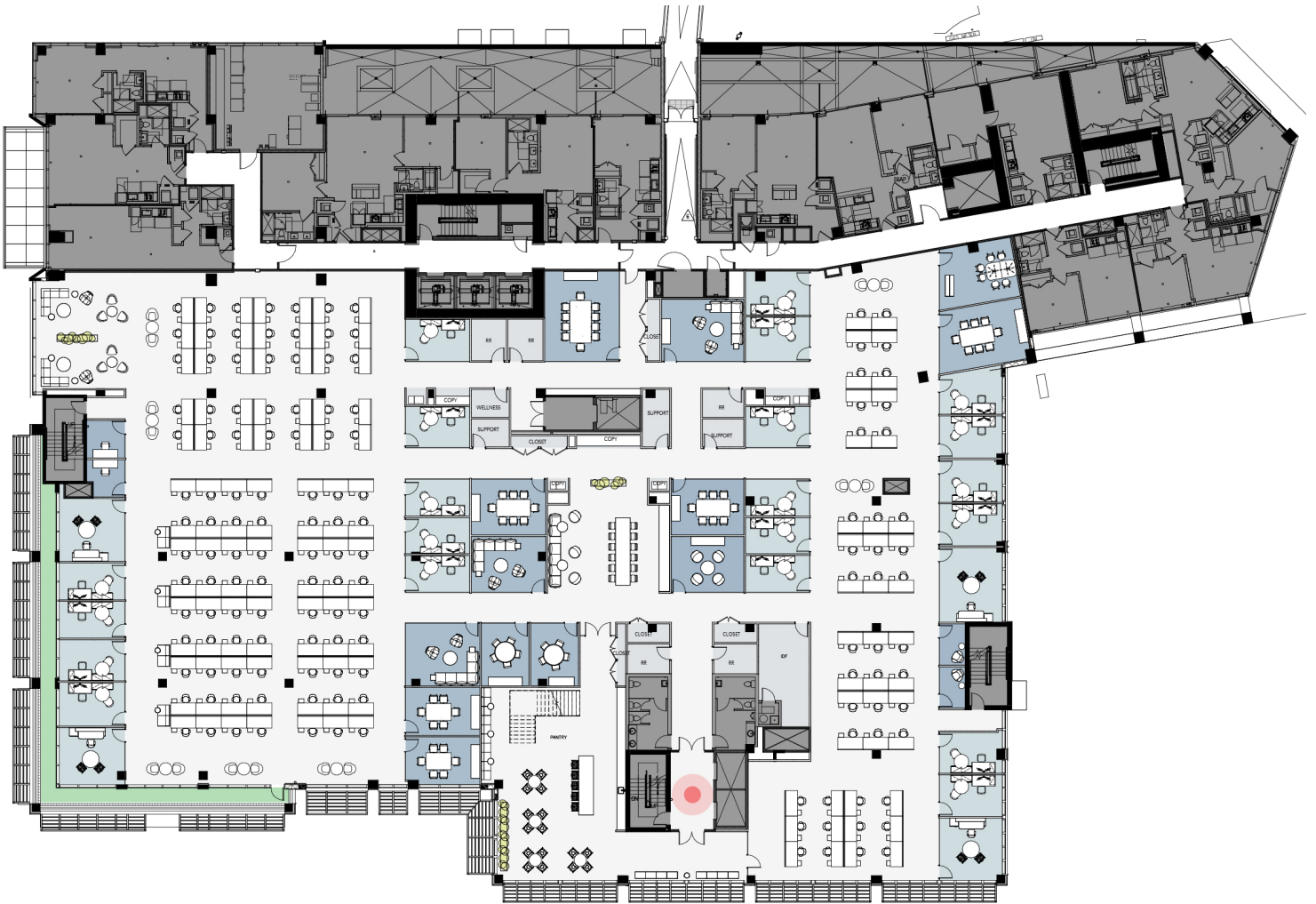
5,900 RSF



# SECOND FLOOR

Test Fit – Financial Firm

30,000 RSF



# THIRD FLOOR

Test Fit – Financial Firm  
5,900 RSF



# 575 ROSEMARY OFFICE OPPORTUNITY OVERVIEW

575 Rosemary is located at The Square in the heart of the Downtown West Palm's premier business and lifestyle neighborhood, situated on the corner of Rosemary Avenue and Hibiscus Street. The 21-story mixed-use building, designed by renowned architectural firm, Elkus Manfredi, features best-in-class office space, 322 luxury rental residences, and retail and restaurants on the ground level including celebrated Mexican taqueria, Tacombi.

For the office worker that also wants to live in the center of it all, 575 Rosemary brings to West Palm a new approach to luxury urban living with an impressive amenity program including a rooftop pool and social lounge, fitness facilities that inspire team sport play, and public spaces designed by globally recognized New York based firm, Meyer Davis.

575 Rosemary offers walkable access to the Brightline train connecting West Palm to Boca Raton, Fort Lauderdale, Aventura and Miami, and a wide array of food and beverage options for grab-and-go, business lunches, happy hour, and chef-driven culinary experiences.

Designed for the future of work with natural light filling every corner of the workspace, 575 Rosemary offers a collaborative work environment across 35,900 RSF, featuring a dedicated ground floor lobby and elevators with exclusive exterior signage opportunity.





## LEASING INFORMATION

### STEPHEN C. WINTER

Senior Vice President  
Related Companies

(646) 582-2273 Direct

(347) 408-9002 Mobile

[stephen.winter@related.com](mailto:stephen.winter@related.com)

### GREG KUHLMAN

Vice President  
Related Companies

(786) 792-3069 Direct

(646) 634-9606 Mobile

[gkuhlman@related.com](mailto:gkuhlman@related.com)

---

### JON BLUNK

President  
TCRE

(305) 400-9887 Direct

(305) 433-1195 Mobile

[jblunk@tcrefl.com](mailto:jblunk@tcrefl.com)

